



DEPARTMENT OF THE NAVY
JOINT EXPEDITIONARY BASE LITTLE CREEK-FORT STORY
2600 TARAWA COURT, SUITE 100
VIRGINIA BEACH, VA 23459-3297

5090
Ser N4/454
26 Aug 22

From: Commander, Joint Expeditionary Base Little Creek-Fort Story
To: Parents and Staff

Subj: JOINT EXPEDITIONARY BASE LITTLE CREEK YOUTH CENTER, BUILDING
3085, DRINKING WATER RESULTS

Encl: (1) Test Results Overview
(2) Sample Summary of Results
(3) Floor Plan of JEB Little Creek Youth Center, Building 3085

1. Lead exposure is a particular concern for children. Lead in drinking water typically comes from the existing plumbing inside buildings including service lines, fittings, solder, water coolers, or water faucets. Navy policy requires we test the lead content of drinking water in priority areas such as Youth Centers, Child Development Group Homes, and Child Development Centers every five years. Testing at the Joint Expeditionary Base (JEB) Little Creek Youth Center, Building 3085, was conducted on 22 July 2022.

2. I am pleased to report that all drinking water intended for consumption, to include drinking water and water intended for cooking or washing, is at or below the Navy lead screening level of 15 parts per billion.

3. In all, 16 samples were taken and tested. An overview and summary of all the test results are included in enclosures (1) and (2). A building floor plan indicating the locations the samples were taken are included in enclosure (3). You can also see a hard copy of our water testing results at the JEB Little Creek Youth Center, Building 3085, which is open Monday through Friday (0500 to 1900).

4. Here are some additional resources you may find informative:

a. Environmental Protection Agency (EPA) (lead in drinking water in schools and day care centers):

<https://www.epa.gov/dwreginfo/lead-drinking-water-schools-and-child-care-facilities>


b. Installation Annual Water quality Report:

https://www.cnmc.navy.mil/regions/cnrma/om/environmental_support/water_quality_information.html

Subj: JOINT EXPEDITIONARY BASE LITTLE CREEK YOUTH CENTER, BUILDING
3085, DRINKING WATER RESULTS

5. To learn more about the installation's public water supplier, see their annual water quality report: <https://www.norfolk.gov/657/Water-Quality-Reports>
6. If you have any health questions or concerns, I encourage you to contact your health care provider or if you are a TRICARE beneficiary, use the Hampton Roads Appointment Center to schedule an appointment with your primary care provider at 1 (866) 645-4584.
7. Rest assured that my team and I will continue to monitor and test water quality, as well as take actions where necessary at the Youth Center to ensure our drinking water complies with Navy policy and EPA regulations. I am committed to the safety and health of all personnel and family members using our facilities.

Sincerely,


M. L. WITHERSPOON
Captain, United States Navy
Commander

Test Results Overview

Overview of Testing Results for Lead in Drinking Water for JEB Little Creek YC, Building 3085

The Navy is committed to maintaining safe drinking water on its installations. The City of Norfolk water supplied to the Navy and the Navy's water distribution system is regularly tested and in compliance with the Safe Drinking Water Act. Because lead exposure is a particular concern for children, and lead may be added to drinking water due to its presence in pipes, fittings, solder, and fixtures inside a building, the Navy policy requires that we test the lead content of drinking water in priority areas such as youth centers (YCs), child development group homes, and child development centers every five years.

Navy environmental personnel conducted lead testing at the Joint Expeditionary Base (JEB) Little Creek YC Building 3085 in accordance with Navy and EPA guidelines. Samples from outlets in the YC were sent to James R. Reed & Associates, a state-certified laboratory, for analysis.

At the JEB Little Creek YC Building 3085, outlets used for drinking, cooking, and washing were tested. Out of **16** samples collected, no water outlet tested above the Navy screening level of 15 parts per billion (ppb) for lead in drinking water in schools and YCs.

A copy of all test results is enclosed for your information. The test results are presented in two tables in Enclosure (2).

- Table 1 **Sample Summary of Results** summarizes the data by category of use (e.g., drinking, cooking, and washing).
- Table 2 **Summary Statistics** summarizes all the data.

Table 1 provides a description of each sampling location using four columns; *Category*, *Outlet ID No.*, *Sampling ID*, and *Outlet Description*. The *Category* column gives information about whether the outlet is used for drinking water (water fountain), cooking (food preparation), or washing (primarily hand-washing). The *Outlet ID No.* is the inventory number for the outlets at the CDC. The *Sample ID* column is the identification used to label each sample bottle. The *Outlet Description* column contains additional information to describe the outlet sampled under each category.

The next set of columns in **Table 1** provide *Initial Sampling Results*.

EPA sampling protocol requires water to not be used for between 8 and 18 hours prior to first draw sampling. Therefore, *Initial Sampling Results were from* first draw samples collected early in the morning before the YC opened and before any water was used.

A floor plan of the JEB Little Creek YC Building 3085 has also been included, as Enclosure (3), to show the locations of the outlets tested.

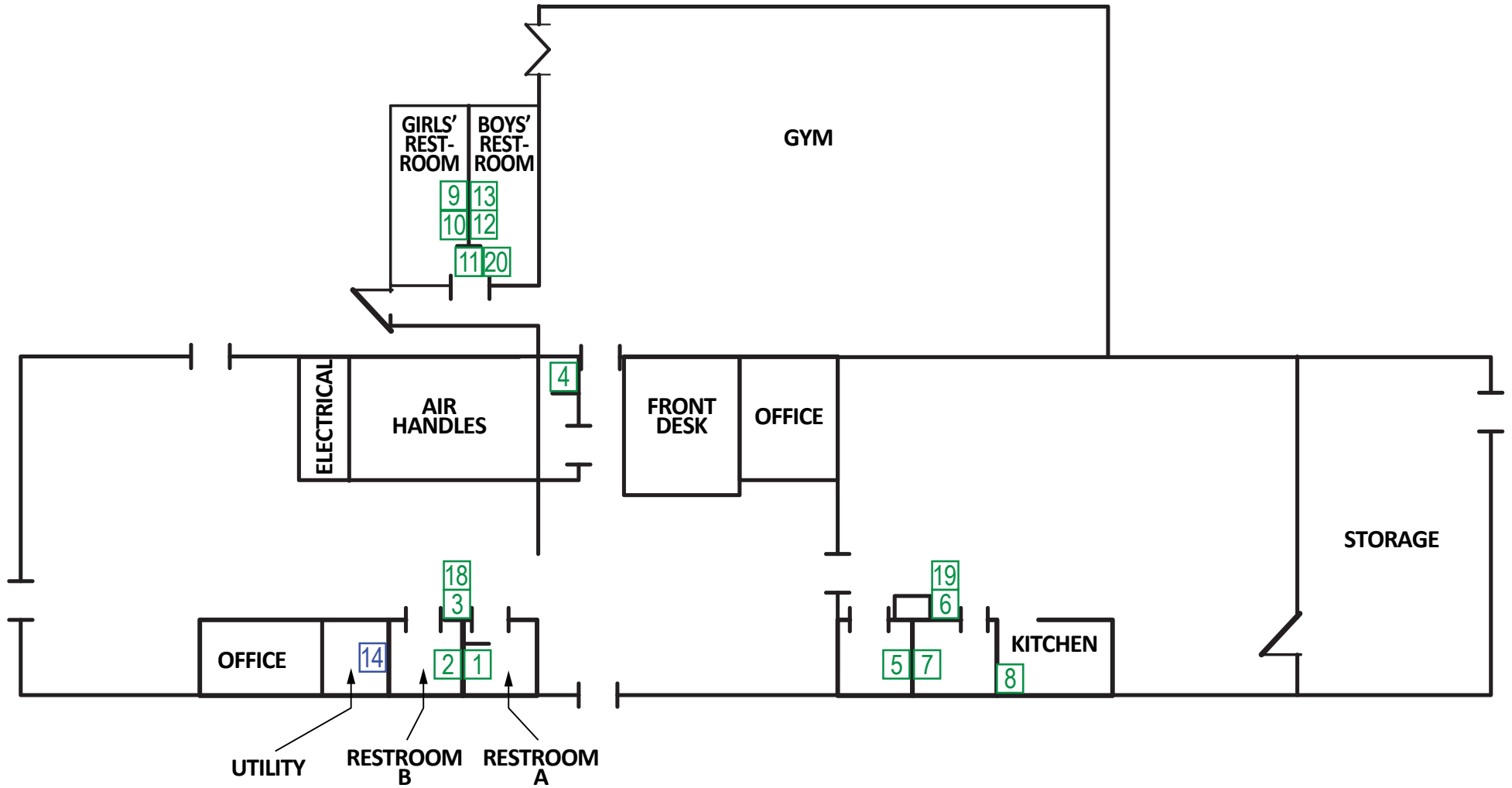
Table 1. Sample Summary of Results
Priority Areas Lead Testing
JEB Little Creek Youth Center, Building 3085

CATEGORY	OUTLET ID NO.	SAMPLE ID	Outlet Description	Comments	INITIAL SAMPLING RESULTS			RE-SAMPLING RESULTS			CORRECTIVE ACTIONS Description	POST REMEDIATION SAMPLING RESULTS	
					First Draw (ppb)	Retest required?	Date Fixture Secured?	Water Fountain 15 min. Follow up Flush Sample - Collected day before First Draw Sampling (ppb)	First Draw (ppb)	Follow up Flush - Collected 30 seconds after First Draw Sampling (ppb)		First Draw (ppb)	Follow up Flush - Collected 30 seconds after First Draw Sampling (ppb)
SAMPLING DATE					7/22/2022			mm/dd/yyyy	mm/dd/yyyy	mm/dd/yyyy		mm/dd/yyyy	mm/dd/yyyy
RESULTS DATE					7/28/2022			mm/dd/yyyy	mm/dd/yyyy	mm/dd/yyyy		mm/dd/yyyy	mm/dd/yyyy
DRINKING	3	JEBLC-3085-HALL-WFCA-FD	Water fountain cooler in Hallway		non-detect	N/A	N/A	N/A	N/A	N/A	N/A	N/A	N/A
DRINKING	6	JEBLC-3085-HALL-WFCB-FD	Water fountain cooler in Hallway		non-detect	N/A	N/A	N/A	N/A	N/A	N/A	N/A	N/A
DRINKING	11	JEBLC-3085-HALL-WFCC-FD	Water fountain cooler in Hallway		non-detect	N/A	N/A	N/A	N/A	N/A	N/A	N/A	N/A
DRINKING	18	JEBLC-3085-HALL-WFCD-FD	Water fountain cooler in Hallway		non-detect	N/A	N/A	N/A	N/A	N/A	N/A	N/A	N/A
DRINKING	19	JEBLC-3085-HALL-WFCE-FD	Water fountain cooler in Hallway		non-detect	N/A	N/A	N/A	N/A	N/A	N/A	N/A	N/A
DRINKING	20	JEBLC-3085-HALL-WFCF-FD	Water fountain cooler in Hallway		non-detect	N/A	N/A	N/A	N/A	N/A	N/A	N/A	N/A
COOKING	8	JEBLC-3085-K-K-FD	Kitchen sink faucet used for food preparation and dishwashing in the Kitchen		non-detect	N/A	N/A	N/A	N/A	N/A	N/A	N/A	N/A
WASHING	1	JEBLC-3085-BATHA-HHW-FD	High handwashing faucet in Restroom A		non-detect	N/A	N/A	N/A	N/A	N/A	N/A	N/A	N/A
WASHING	2	JEBLC-3085-BATHB-HHW-FD	High handwashing faucet in Restroom B		non-detect	N/A	N/A	N/A	N/A	N/A	N/A	N/A	N/A
WASHING	4	JEBLC-3085-LOUNGE-HHW-FD	High handwashing faucet in Staff Lounge		non-detect	N/A	N/A	N/A	N/A	N/A	N/A	N/A	N/A
WASHING	5	JEBLC-3085-BATHD-HHW-FD	High handwashing faucet in Restroom D		non-detect	N/A	N/A	N/A	N/A	N/A	N/A	N/A	N/A
WASHING	7	JEBLC-3085-BATHE-HHW-FD	High handwashing faucet in Restroom E		non-detect	N/A	N/A	N/A	N/A	N/A	N/A	N/A	N/A
WASHING	9	JEBLC-3085-BATHF-HHWA-FD	High handwashing faucet in Restroom F		non-detect	N/A	N/A	N/A	N/A	N/A	N/A	N/A	N/A
WASHING	10	JEBLC-3085-BATHF-HHWB-FD	High handwashing faucet in Restroom F		non-detect	N/A	N/A	N/A	N/A	N/A	N/A	N/A	N/A
WASHING	12	JEBLC-3085-BATHG-HHWA-FD	High handwashing faucet in Restroom G		non-detect	N/A	N/A	N/A	N/A	N/A	N/A	N/A	N/A
WASHING	13	JEBLC-3085-BATHG-HHWB-FD	High handwashing faucet in Restroom G		non-detect	N/A	N/A	N/A	N/A	N/A	N/A	N/A	N/A

Table 2. Summary Statistics

CATEGORY	INITIAL SAMPLING RESULTS		RE-SAMPLING RESULTS		POST REMEDIATION
	First Draw (ppb)	Lead Screening Level of 15 ppb Water Fountain Follow up Flush Sample - Collected day before First Draw Sampling (ppb)	First Draw (ppb)	Follow up Flush - Collected 30 seconds after First Draw Sampling (ppb)	First Draw (ppb)
Total Drinking	6	N/A	N/A	N/A	N/A
Total Drinking > 15 ppb	0	N/A	N/A	N/A	N/A
Total Cooking	1	N/A	N/A	N/A	N/A
Total Cooking > 15 ppb	0	N/A	N/A	N/A	N/A
Total Washing	9	N/A	N/A	N/A	N/A
Total Washing > 15 ppb	0	N/A	N/A	N/A	N/A
Total Samples	16	N/A	N/A	N/A	N/A
Total Samples > 15 ppb	0	N/A	N/A	N/A	N/A

Floor Plan of JEB Little Creek Youth Center, Building 3085



1 BUILDING 3085 - FLOOR PLAN

NOT TO SCALE



Outlet numbers pertaining to the floor plan.
 Red = Above 15 ppb
 Green = Below 15 ppb
 Blue = Not Sampled: outlet not used for drinking, cooking, or washing